

BY

scenen

TECHNICAL/VENUE SPEC BYSCENEN MAIN STAGE 2019

Ver: 01012019



Welcome to Byscenen!

Byscenen is a venue with a long history of culture in Trondheim since it was built in 1878. After technical upgrades in 2009, Byscenen is an up to date venue equipped with good facilities to do a variety of different kinds of live shows. Here you will find venue and technical information. This document and other relevant information can be found online as well: byscenen.no/specs PW: **specz**

Venue Manager:

Ulrich Bang Sørensen
Cell: +47 940 36 750
ulrich@byscenen.no

Production Manager:

Thomas Denstad
Cell: +47 958 44 888
thomas@byscenen.no

Booking:

Kim Aasli
Cell: +47 926 30 274
kim@byscenen.no

Venue Information:
Byscenen Trondheim
Kongens gate 19, 7012 Trondheim, Norway
Latitude: 63.430093 | Longitude: 10.39159

Byscenen Trondheim

Kongensgate 19 inng. Repslagerveita
7012 Trondheim
NORWAY

Capacity:

Standing 700 people
Seated 400 people (280 floor/120 balcony)

PARKING:

Byscenen do not have its own dedicated parking space. There is normal street parking outside the venue. This costs money from 08:00-20:00 on weekdays and 08:00-15:00 on Saturdays. Sunday is free. We can buy prepaid parking permit. Send registration number. We can rent parking space for 1 Nightliner or truck with the maximum length of 20m including trailer. We supply 32A 400V RED CEE or 3x16A Shuko power. We can also fit one semi truck off site. Detailed parking info and directions can be found online: byscenen.no/specs PW: specs

LOAD IN:

From street level thru lobby and into elevator. Elevator size is **2.85 m deep x 1.65 m wide x 2.00 m tall**. Cap. 2500 kg.
From elevator to stage by Power lifter. Maximum capacity 750kg.

LOAD IN CREW:

We can hire stagehands for load in and load out. This is expensive, and we usually hire 2 stagehands for a "normal" nightliner production with trailer that asks for 4 stagehands for loading.

MERCHANDISE:

Byscenen has no designated booth for sale of merchandise.
We have two options. This can be discussed with house representative at arrival.
Byscenen has no merchandise fee. If local sales person is needed, please notify production in advance. Min. 3 hours pay.

SMOKING:

There is no smoking in the entire venue. We don't have designated smoking areas at Byscenen. There is a restaurant connected to Byscenen. They have a public smoking area. Restaurant Alma's is located next door to Byscenen's main entrance. Restaurant is closed on Sundays.

INTERNET:

There is wlan thru out the venue.
SSID: **Byscenen/Almas/Boxer**
Password: **byscenen** (choose password if you don't want to use fb check in)
For streaming and other critical internet needs, check with venue management.

VENUE CREW:

Depending on production size, but a minimum of:

- 1 x Venue representative
- 1 x Sound engineer/technical manager
- 1 x Light engineer (if needed)
- 1 x Monitor engineer

if monitormix is used **Extra cost!!**

1 x Artist Host

After 9 hours, overtime pay will kick in for local crew.

PROPOSED SCHEDULE:

	doors 20h	doors 21h
LOCAL CREW GET IN:	14:00	15:00
BAND LOAD IN:	15:00	16:00
VENUE CLEAR:	19:30	20:30
DOORS:	20:00	21:00
SHOWTIME:	21:00	22:00
CURFEW:	00:00	01:00
BACKSTAGE CERFEW:	01:00	02:00

Saturdays and other weekdays we might have access all day. Check with management.

CATERING:

We do have a in-house restaurant located in the first floor. This is the preferred option for lunch and dinner. The restaurant have vegetarian options. Menu can be found here: byscenen.no/specs PW: specs

Backstage Facilities:

DRESSING ROOMS:

There are 2 lockable dressing rooms and one shared backstage room located on upper floor from the stage. It is accessible thru stairs and elevator.

The dressing rooms can be fitted with a 110V step-down transformer upon request.

DRESSING ROOM 1:

4,2m x 3,2m. Sofa, mirror, refrigerator, shower and toilet.

DRESSING ROOM 2:

3,1m x 3,4m. Sofa, mirror, refrigerator and shower.

DRESSING ROOM 3/Shared:

4,2m x 3,3m. 2x refrigerators and 2 x sofas

PRODUCTION OFFICE:

Production office is located next to the dressing rooms.

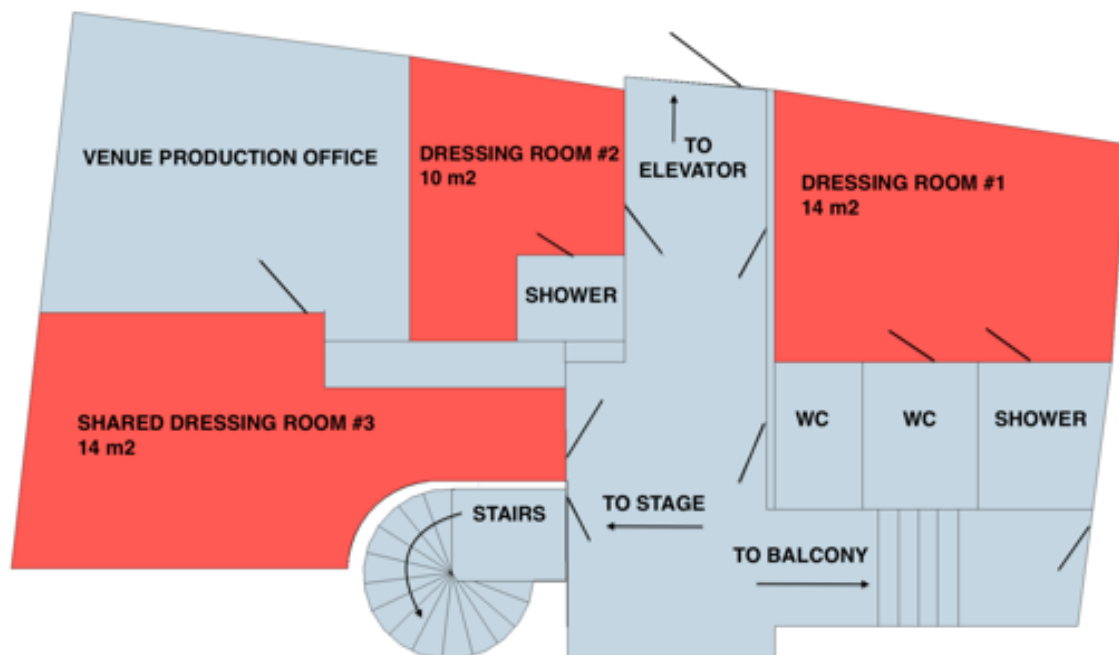
Access is thru the shared backstage.

The office is equipped with a Colour Laser

Printer and office supplies.

The production office can be fitted with a 110V step-down transformer upon request.

Dressing Room Floor Plan:



Laundry:

We do not have a in-house laundry service. Laundromat located close by.

Hotel:

We have several hotels in walking distance from the venue. We have a deal with Comfort Hotel Augustin located across the street from the venue.

Please contact venue management for details and booking.

Comfort Hotel Augustin

Kongens Gate 26

7011 Trondheim

Phone: +47 73 54 70 00



USEFUL LOCAL SERVICES:

Laundromat:

Lusparken Vaskeri

Fjordgata 12

7010 Trondheim

13 min walk

5 min drive

Music Store:

4Sound

Fjordgata 1

7010 Trondheim

4sound.no

13 min walk

5 min drive

Gym:

Impulse Fitness

Kongens Gate 49

7012 Trondheim

impulse.no

3 min walk

Pharmacy:

Vitusapotek Trondheim Torg

Kongens gate 11

7013 Trondheim

Across the street

from venue

Opening hours:

09:00-20:00 Weekdays

09:00-18:00 Saturday

Pharmacy: (open til midnight)

Vitusapotek Solsiden

Beddingen 4

7042 Trondheim

21 min walk

6 min drive

Opening hours:

08:30-00:00 Monday-Saturday

10:00-00:00 Sundays

Doctor/Medical service:

Please contact management.

We have contacts.

Dentist:

Please contact management.

We have contacts.

Technical information:

STAGE:

Width 8.8 m
Depth 6.3 m
Height 0.8 m
Clarence 6 m
Side Stage 1,5 m side stage SR and SL
Pre-rig area behind stage. Can fit 2x rolling risers

SOUND:

PA PR. SIDE: (AVON installation)

1 x Electro-Voice XLD Grid
8 x Electro-Voice XLD 281/291 topp
2 x Electro-Voice XCS312 flown subs
2 x Electro-Voice X-sub 2x18 floor-stacked
10 x Electro-Voice TG7/TG5 amp
Electro-Voice RCM-26 IRISNet module
1 ton motorised air trolleys

FOH:

Midas Pro2 w/DL251 48/16 stagebox
8 x XLR mic preamps FOH
8 x XLR outputs FOH
56/24 XLR in/out total

FX:

LEXICON PCM 92
Shout-system to MON

MON:

12 x Turbosound TMW 115 monitors, 15" coax
4 x MC2 Ti2000
8 passive mixes
2 x Electro-Voice XI 1152 AF Side-fills
2 x Electro-Voice MT2 2x18" subs
Midas Pro2c w/DL251 48/16 stage box
Monitormix Extra Cost!

MICROPHONES/DI BOXES:

Dynamic:

2 x Shure Beta 52 2 x Shure Beta 91
8 x Shure SM 58 4 x Shure B58
6 x Shure Sm 57 6 x Sennheiser 604

Condenser:

4 x Shure SM 81 4 x Shure B 27
4 x AKG 451
12 x Klark Teknik DN-100

STANDS:

12 x K&M Tall mic stands w/boom
4 x K&M Tall round base w/boom
12 x K&M Short round base w/boom

PATCH:

LK37 patch system
5 x 12ch stage boxes
Passive analog split system with XLR fan out and LK37

DB LIMIT:

Byscenen has a **102dBA Leq15min** dB limit. Artist production is asked to respect this limit. Wave Capture RT-3 Class 1 system used to monitor sound levels.

Wireless systems: **Extra Cost!**

6x ULXD w/beltack and DPA 4066
4x QLXD w/beltack and DPA 4066
2x ULXD Beta58 handheld
2x instrument cables for beltack

WIRELESS FREQUENCIES:

Available frequencies in our area: (maximum output 50mW) No license needed.

518 - 526 MHz (K27)
534 - 542 MHz (K29)
550 - 566 MHz (K31-32)
574 - 590 MHz (K34-35)
606 - 622 MHz (K38-39)
638 - 654 MHz (K42-43)
686 - 742 MHz (K48-54)
750 - 790 MHz (K56-60)

POWER:

2 x 63A CEE 400V for dimmers
1 x 32A CEE 400V for sound
2 x 16A CEE 400V for backline
3 x 16A Schuko for backline
2 x 16A Schuko for lights
2 x 16A Schuko for FOH

Guest Power:

1 x 63A CEE 400V for lights
2 x 32A CEE 400V for backline/lights

LIGHTS:

1 x GrandMA2 Ultralight
8 x Prolights Diamond19BK moving wash
6 x Prolights LUMA700 moving spot
54 ch Avab-Cac DDE Actor dimmer
40 x Prolite 1kw par cans
6 x 1000w Profiles
6 x 1000w ADB Fresnel
4 x PAR64 short nose floor cans
4 x 4-light
4 x Martin Atomic 3000 strobe
1 x MDG ATMe Hazer DMX
1 x JEM ZR31 Smoke Machine
2 x DMX univers from FOH to stage
1 x Guest DMX univers
1 x Cat6/Artnet Swisson XND-4B
6 x Martin MAC Aura **Extra cost!!**

VIDEO: **Extra cost!!**

1 x Panasonic DW5100 5500 ansi
mounted at FOH
1 x Zoom lens
1 x Standard lens
1 x White backdrop 9 m x 5 m
1 x Motorised projector screen 4 m x 4 m.
VGA/DVI/HDMI hook up on stage
VGA, HDMI, DVI hook-up at FOH
HD-SDI coax converters available.

US/UK Power:

2 x 230V-110V step-down trafo (1 kw)
4 x US power strips
3 x EU-UK power strips

RISERS:

9 x NIVTEC risers
20 cm, 40 cm, 60 cm and 80 cm legs
12 x wheels

HOAC Pull out (in front of the stage)

55 cm or 80 cm tall
8.6 m wide
3.5 m deep
Total depth 9.8 m without backdrop

Multicore stage-FOH:

4 x shielded CAT6 etherCON
6 x XLR analog lines

BACKLINE:

Drums:

PDP Platinum Series:

24"bd, 12"rt, 14"ft, 16"ft 14" snare
2 x snare stands
4 x boom stands
1 x 3 legged HH stand
1 x drum throne
DW9000 kick drum pedal

Premier Genista

22"bd, 12"rt, 14"ft, 16"ft, 14" snare
2 x snare stands
4 x boom stands
1 x 3 legged HH stand
1 x drum throne
Pearl kick drum pedal

Bass:

Ampeg SVT Classic Head
Ampeg PF800 Head
Ampeg SVT 410HE cabinet
Ampeg SVT 810 cabinet

Guitar:

1 x VOX AC30C2
1 x Fender Deluxe Reverb
1 x Fender Hot Rod Deluxe 1 x 12" combo
1 x Fender Hot Rod Deville 4 x 10" combo
1 x Marshall 1960A Lead cabinet

Piano:

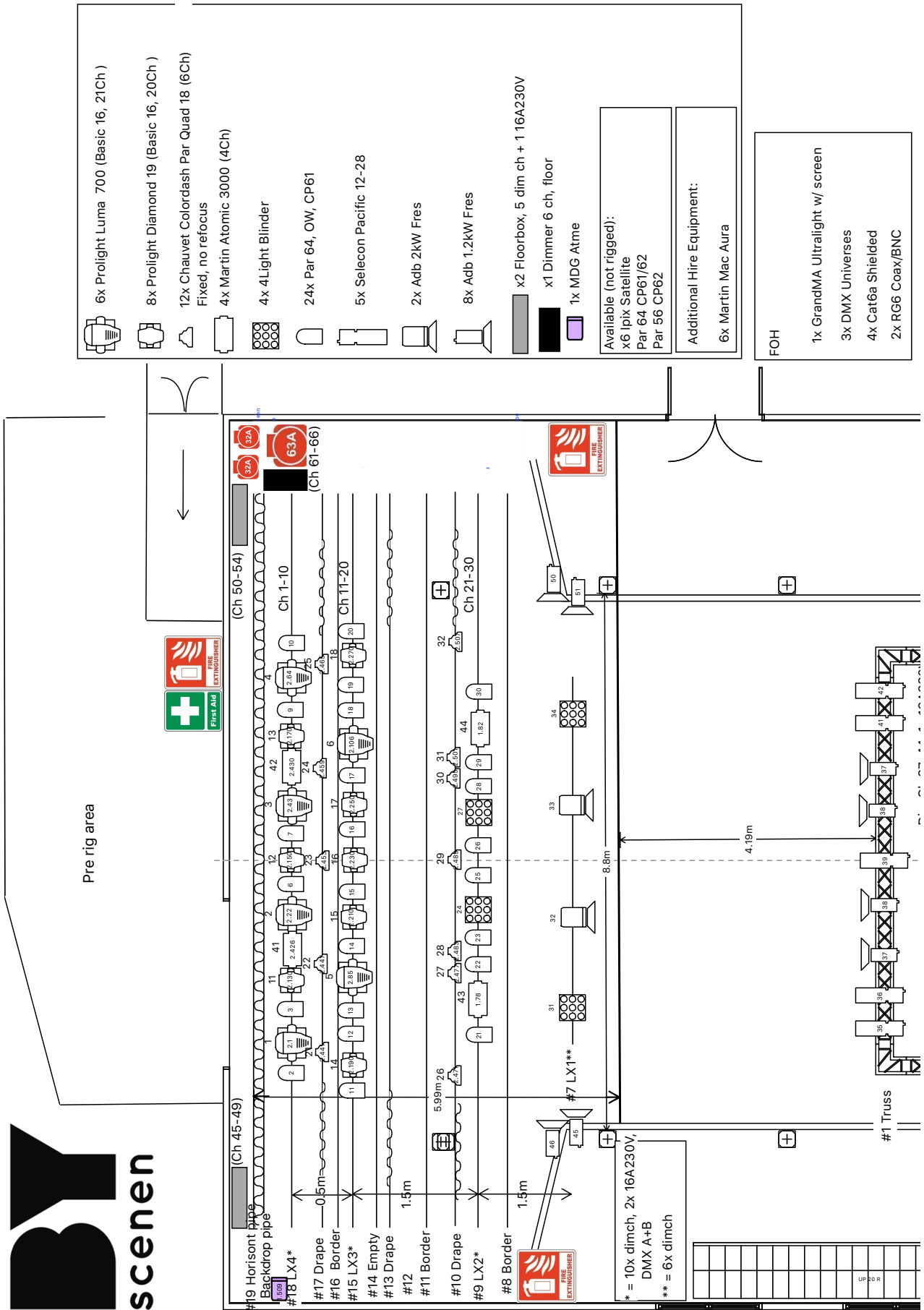
1 x Steinway Model C Grand Piano **Extra Cost!!**
1 x Schimmel 120S Piano

Stands:

6 x guitar stands
2 x Hercules guitar stands
4 x single keyboard stands
1 x double keyboard stand

DJ equipment:

1 x Pioneer DJM400 mixer
2 x Pioneer CDJ 850 (w/USB, no link)
2 x Stanton turntables





Byscenen Patch list Jan-19:

Fixture ID:	Location:	Manufacturer:	Fixture:	Mode:	Address:
1	#18 Lx 4	Prolights	Luma 700	Basic 16, 21Ch	2.1
2	#18 Lx 4	Prolights	Luma 700	Basic 16, 21Ch	2.22
3	#18 Lx 4	Prolights	Luma 700	Basic 16, 21Ch	2.43
4	#18 Lx 4	Prolights	Luma 700	Basic 16, 21Ch	2.64
5	#15 Lx 3	Prolights	Luma 700	Basic 16, 21Ch	2.85
6	#15 Lx 3	Prolights	Luma 700	Basic 16, 21Ch	2.106
11	#18 Lx 4	Prolights	Diamond 19	Basic 16, 20ch	2.130
12	#18 Lx 4	Prolights	Diamond 19	Basic 16, 20ch	2.150
13	#18 Lx 4	Prolights	Diamond 19	Basic 16, 20ch	2.170
14	#15 Lx 3	Prolights	Diamond 19	Basic 16, 20ch	2.190
15	#15 Lx 3	Prolights	Diamond 19	Basic 16, 20ch	2.210
16	#15 Lx 3	Prolights	Diamond 19	Basic 16, 20ch	2.230
17	#15 Lx 3	Prolights	Diamond 19	Basic 16, 20ch	2.250
18	#15 Lx 3	Prolights	Diamond 19	Basic 16, 20ch	2.270
21	#17	Chauvet	Colordash Par Quad 18	6ch	2.441
22	#17	Chauvet	Colordash Par Quad 18	6ch	2.447
23	#17	Chauvet	Colordash Par Quad 18	6ch	2.453
24	#17	Chauvet	Colordash Par Quad 18	6ch	2.459
25	#17	Chauvet	Colordash Par Quad 18	6ch	2.465
26	#10	Chauvet	Colordash Par Quad 18	6ch	2.471
27	#10	Chauvet	Colordash Par Quad 18	6ch	2.477
28	#10	Chauvet	Colordash Par Quad 18	6ch	2.483
29	#10	Chauvet	Colordash Par Quad 18	6ch	2.489
30	#10	Chauvet	Colordash Par Quad 18	6ch	2.495
31	#10	Chauvet	Colordash Par Quad 18	6ch	2.501
32	#10	Chauvet	Colordash Par Quad 18	6ch	2.507
41	#18 Lx 4	Martin	Atomic 3000	4ch	2.426
42	#18 Lx 4	Martin	Atomic 3000	4ch	2.430
43	#9 Lx 2	Martin	Atomic 3000	4ch	1.78
44	#9 Lx 2	Martin	Atomic 3000	4ch	1.82
509	Floor SR	MDG	Atme	3ch	1.509
DIM	-	-	-	-	1.1-1.66
House Lights	#1 Truss	DIM	DIM		1.43 + 1.44

Notes: